

# infinity collection

by Ecotile



## Modular Commercial Flooring

Introducing Infinity floor tiles. A strong, durable and rapidly installed flooring solution for busy commercial and retail premises.

Effortlessly blending style and functionality, their impeccable fit makes maintenance and cleaning a breeze. So say goodbye to traditional LVT and sheet vinyl. And create a sleek and professional environment without compromising on durability and resilience.

## Endless Possibilities

Stylish, versatile and durable, infinity floor tiles bring all commercial and retail areas to life:

- Supermarkets
- Restaurants
- Retail Stores
- Hotel Lobbies
- Education
- Healthcare
- Front of House
- Airports
- Public Areas
- Transport Hubs

Looking for an incredibly convenient commercial flooring solution that can help you gain a competitive edge?

Take The Next Step Towards *infinity*

Head Office, Factory & Showroom  
Unit 15 North Luton Industrial Estate,  
Sedgwick Road, Luton, LU4 9DT

01582 788 232  
[ecotileflooring.com](http://ecotileflooring.com)  
[hello@ecotileflooring.com](mailto:hello@ecotileflooring.com)



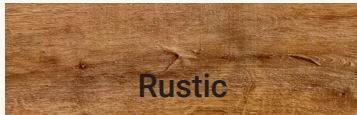


## Style Meets Functionality

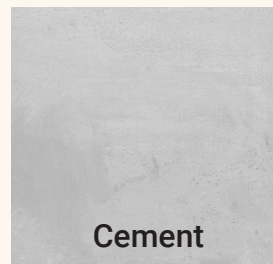
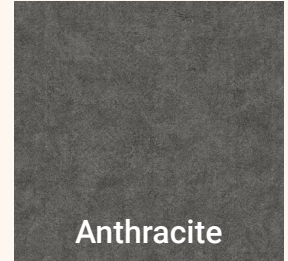
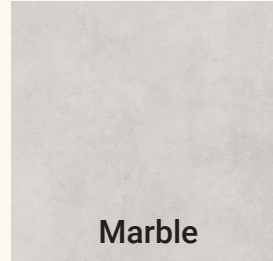
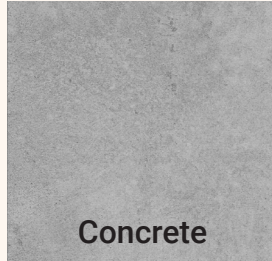
A modular, more convenient alternative to LVT and sheet vinyl. Infinity tiles offer a strong, durable and rapidly installed commercial flooring solution.

Choose from 10 realistic stone or traditional wood effect finishes to create your perfect environment.

### Wood Effect (66 x 33cm)



### Stone and Ceramic Effect (61 x 61cm)

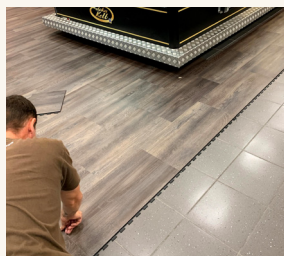


## Instantly Installed

Rapidly installed with minimum disruption, Infinity Floor Tiles can be sealed to create a liquid-tight hidden joint. Perfect for containing spills and keeping premises safe and clean.

## Super Strong

Infinity is engineered to support high-traffic areas. Its fibreglass PVC structure ensures it can easily withstand pallet trucks, pump trucks and forklifts.



Trusted, Accredited Supplier

ecovadis



*infinity collection*  
by Ecotile