

ecotile 500/6 interlocking floor tile

Installation & Cleaning Instructions

The Versatile Flooring Co. Ltd

1 Devonshire Business Centre, Cranborne Industrial Estate, Potters Bar, Herts. EN6 3JR

T: +44 (0) 1707 800060

F : +44 (0) 1707 657282

E: info@versatileflooring.co.uk

www.versatileflooring.co.uk



ecotile 500/6 interlocking tile has been developed with the main purpose of solving some of the flooring industry's most common problems. ecotile 500/6 provides quick & easy flooring installations for a vast range of commercial residential & industrial applications. This patented, interlocking design features a unique hidden joining and sealing method. The ecotile 500/6 joining system enables you to lay the tiles quickly and easily on any firm, flat surface, using only a mallet, utility knife and common installation tools.

For most applications, the tile is installed without adhesive.



Key Features

- Fast & easy installation - No special tools or installation experience required, most installations require no adhesive.
- Little or no down time - Because ecotile requires no adhesives or curing, it accepts floor traffic & rolling loads immediately.
- Minimal sub-floor preparation - ecotile may be installed over any smooth, structurally sound sub-floor
- Install over contaminated or damp problem slabs - ecotile may be installed where other floors cannot, with huge cost savings!
- Install over new uncured slabs - ecotile may be installed over uncured concrete, saving precious days in the construction schedule.
- Reusable - Tiles can easily be removed and re-laid in another area if required
- Installations in VOC Sensitive or Restricted Areas - With the interlocking system, no VOC's are emitted from solvents, sealers or adhesives
- Easily repaired - Damaged tiles are easily removed & replaced

ecotile Installations – The essential rules

- **Make sure the tiles are warm, ensure that they have been stored and acclimatised to at least 15°C for 24 hours prior to starting installation.**
- **Fit all full size tiles and allow them to settle before starting the cuts, dependant on the size of the installation the amount of time will vary but do not cut as you go, leave the cuts till last.**
- **Leave a 5mm expansion gap between the tiles and any fixed point. If the tiles have not been allowed to acclimatise or are being fitted at a temperature below 15°C (not recommended) it may be necessary to leave a larger gap.**
- **Once installed and all other work has been completed apply two to three coats of sealer to protect and ease cleaning.**
- **Sweep regularly to remove dust and dirt.**

Site Conditions

ecotile is recommended for interior applications only. The areas to receive flooring should be weather-tight and maintained at a minimum uniform temperature of 15°C for 24 hours prior to and during the installation. The material must be acclimatised at room temperature for a minimum of 24 hours before starting the installation. Failure to acclimatise the tile prior to installation may result in variance in tile size and difficulty in joining the EcoTile 6HJT interlock.

Sub-Floor Preparation

Because of the ecotile 500/6 interlocking system, only minimal sub-floor preparation is required or needed when the tile is installed in a loose lay configuration. It is not necessary to remove old paint, epoxy coatings, concrete sealers and/or curing compounds, oils grease or other contaminants that normally must be removed.

- Remove grind/sand down any protrusions such as: nails, bolts or lumps in the sub-floor
- Fill any large holes, voids or cracks using a cementitious base-patching compound
- Sweep or vacuum floor to remove all dirt & debris

Loose Lay Installation

Installation of the tile should begin in a corner along the straightest wall. Leave a 5mm space between the tile and the wall to allow for the material to expand & contract with temperature changes. Wood doorjamb can be undercut so the tile can slip underneath. With metal doorjamb – cut the flooring material to within 5mm & then caulk around the jamb.

Cuts can be made using a carpenter square and stanley / utility knife with a sharp blade, jig saw, table saw, band saw or guillotine. Border tiles should be cut 5mm away from the wall to allow for expansion and contraction of the tile due to temperature changes.

If your application will have an excessive amount of fluids on the floor, it is recommended to caulk the gap between the wall and the tile using a polyurethane or acrylic adhesive. Lay tiles with the finished edge to the walls (Fig. 1) & the tab edges to the top & right side. It is very important to lay the first row very straight, this will affect the entire installation



Fig. 1

Lay the tile from your left to your right always placing the finished edge on top of the tab edge. When installing each tile, line up the tabs at the corner to help align the **ecotile** 6HJT joining system (Fig. 2)



Fig. 2

Using rubber mallet, tap tile together starting from the corner, working your way to the outside (Fig. 3)

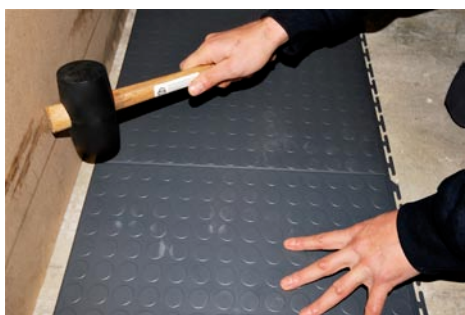


Fig. 3

Install one row at a time, completing each row before beginning the next row. When installing the second & consecutive rows, line up the corner tabs. Using the rubber mallet, tap tiles together, starting at the corner & working your way out to each edge



The Versatile Flooring Company

1 Devonshire Business Centre
Cranborne Industrial Estate
Potters Bar Hertfordshire EN6 3JR
T: + 44 (0) 01707 800060
F + 44 (0) 1707 657282
www.versatileflooring.co.uk
info@versatileflooring.co.uk



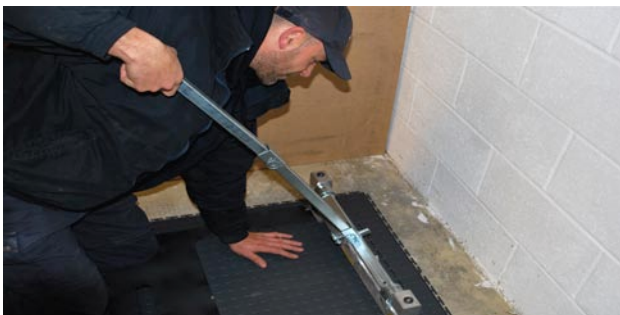
Cutting the tiles

ecotile may be cut using several methods; stanley / utility knife, jig saw, table saw, band saw or guillotine.

Pic. 1 – Cut with a Stanley / utility knife with a concave blade and straight edge.



Pic. 2 – Cutting the tiles using our Magnum shear



Finishing Installation

If your application has an excessive amount of fluids on the floor, it is recommended to caulk the 5mm gap between the wall using a polyurethane acrylic adhesive to prevent the fluids from seeping underneath the newly installed tile at the perimeter.

Install wall base so that it barely rests on top of the tile and does not restrict the tiles ability to expand & contract.

Pic. 3 – Ensure a 5mm gap is left between the tiles and any fixed point



The Versatile Flooring Company
1 Devonshire Business Centre
Cranborne Industrial Estate
Potters Bar Hertfordshire EN6 3JR
T: + 44 (0) 01707 800060
F + 44 (0) 1707 657282
www.versatileflooring.co.uk
info@versatileflooring.co.uk



Pic. 4 – Finish around the edges using either a mastic bead or our ecotile sit on skirting



Ramps & Reducer Strips

The Versatile Flooring Company produces colour matched 46mm wide reducer strips. Trim tile to desired size, apply pvc cold weld adhesive to the reducer flange that slips underneath the tile, slide reducer flange under tile & hand roll to ensure proper adhesive transfer between ramp and tile

ecotile Cleaning & Maintenance

ecotile is compatible with all normal maintenance practices. The maintenance procedures that you choose should be based on; size, area of installation, appearance level you desire (high or low gloss), as well as your maintenance equipment.

Initial Cleanup/Maintenance

1. Remove all surface soil, debris, sand & grit by sweeping dust, mopping or vacuuming.
2. Scrub the floor with Avmor Extra Heavy Duty Degreaser
3. Apply Rotex Floor Cleaner with a mop & bucket, scrub with a rotary scrubber with soft nylon brush or automatic scrubber with soft nylon brushes.
4. Pick up solution with a wet vac or mop & bucket
5. Rinse with clean water, allow to dry.
6. Apply Avmor Distance floor finish (if desired)
7. Apply with a clean finish mop or finish applicator.
8. Allow 30 minutes dry time between each coat.

Daily / Regular Maintenance: Remove all surface soil, debris, sand & grit by sweeping, dust mopping or vacuuming.

Option 1 – Dry Maintenance Method

- Spray, clean & buff using a rotary machine (175 – 1500 rpm) with an appropriate pad & spray buff solution

Option 2 – Wet Maintenance Method

- Scrub or mop with Avmor Extra Heavy Duty Degreaser.
- Apply cleaning solution with Biomop, scrub with rotary scrubber with soft nylon brushes or automatic scrubber with soft nylon brushes.
- Pick up solution with a wet vac or mop & bucket
- Rinse with clean water & allow floor to dry.

Scrub & Recoat

- Dust mop to remove loose soil
- Heavy scrub using rotary scrubber or automatic scrubber with scrubbing pad & double strength of Avmor Rotex floor cleaner
- Pick up solution with a wet vac
- Rinse with clean water & allow to thoroughly dry
- Apply 1 – 2 thin coats of floor finish following initial application procedures.



The Versatile Flooring Company

1 Devonshire Business Centre
Cranborne Industrial Estate
Potters Bar Hertfordshire EN6 3JR
T: + 44 (0) 01707 800060
F + 44 (0) 1707 657282
www.versatileflooring.co.uk
info@versatileflooring.co.uk

