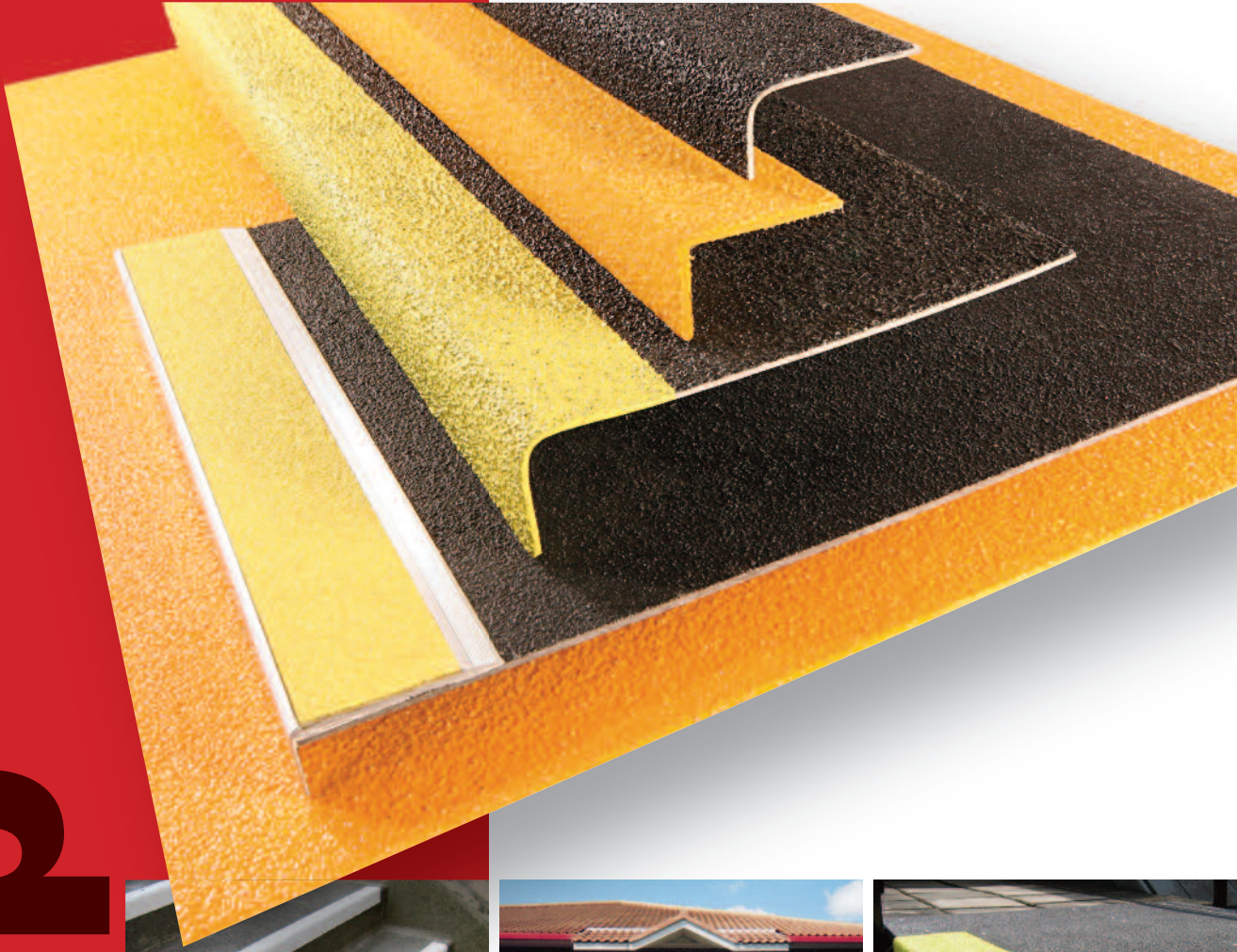


The UK's premier flooring solutions company

suregrip



Making Slippery Surfaces Safer

**A quick simple
and cost effective
anti-slip solution**

The world's No.1 range
of anti-slip safety products



Suregrip

Key Benefits

Introduction

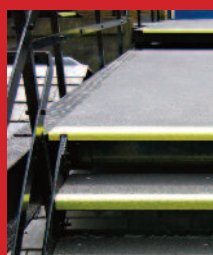
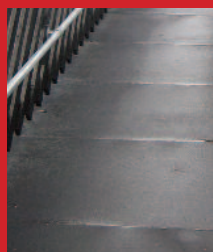
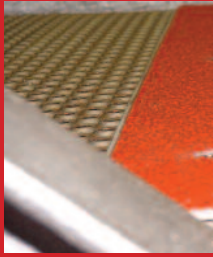
The Versatile Flooring Company is the UK's premier flooring solutions Company. A world leader in the manufacture, supply and installation of Suregrip anti-slip safety products, our success at home and abroad is due to an absolute commitment to quality, customer service and product innovation. In line with our customers' changing needs we have invested heavily to develop a tough, low maintenance, environmentally friendly and extremely durable range of anti-slip stair treads, nosing, flat sheet, decking and grating suitable for almost any environment.

We have established an unrivalled reputation for product quality, industry expertise, uncompromising client service and an ability to meet demanding lead times. The Versatile Flooring Company work closely with many of the UK's leading manufacturing companies, building and facilities managers, local authorities and educational establishments delivering innovative, cost effective and practical solutions that can be implemented quickly and with minimal disruption.

Manufacture, Installation & Responsible Environmental Practise

SureGrip is manufactured from corrosion-resistant GRP (glass reinforced plastic), with a durable isophthalic resin coating encapsulating high-grade silicon carbide anti-slip grit. Different sizes of anti-slip aggregate are available to suit domestic, commercial or industrial applications. SureGrip is quick and simple to install using an external grade gap filling adhesive and mechanical fixings suitable for the substrate SureGrip is being applied to. We recommend using stainless steel fixings whenever possible to avoid the risk of corrosion causing the fixture to fail. Use wood screws for timber substrates, screw and rawplug for concrete and stone, self-drill / self-tapping screws or nut and bolt fixings for metal substrates.

- ***Exceptional durability***
- ***Quick and simple to install***
- ***Excellent corrosion resistance***
- ***Environmentally friendly***
- ***Very low through life cost***
- ***The world's No.1 range of anti-slip safety products***



The SureGrip advantage

The world's No. 1 range of anti-slip safety products

Simple Installation

Quick and easy to install with minimal disruption to site activities, just fit straight over the existing surface

Excellent Anti-slip Performance

Precision engineered incorporating the highest grade of isophthalic resins and silicon carbide grit.

Disability Discrimination Act Compliant

Helps to meet DDA Regulations (Disability Discrimination Act 1995) and document 'M' of building regulations

Chemically Resistant

Resists most automotive, aviation and other fluids

Safe

Extra traction in areas of severe slip hazard

Exceptional Durability

Virtually indestructible 4mm thick glass reinforced plastic and 100% corrosion resistant

Instant Results

Can be fixed over any solid surface

Proven Technology

Tried and tested by insurance companies and shown to significantly reduce the risk of accidents

Fire Retardant

Tested to EN ISO 13501-1 Class Bfl s1 & BS 476: Part 7 Class 2

Better Performance

Longer lasting and easier to maintain than paint, resin or anti-slip tapes

Lower Life Cycle Cost

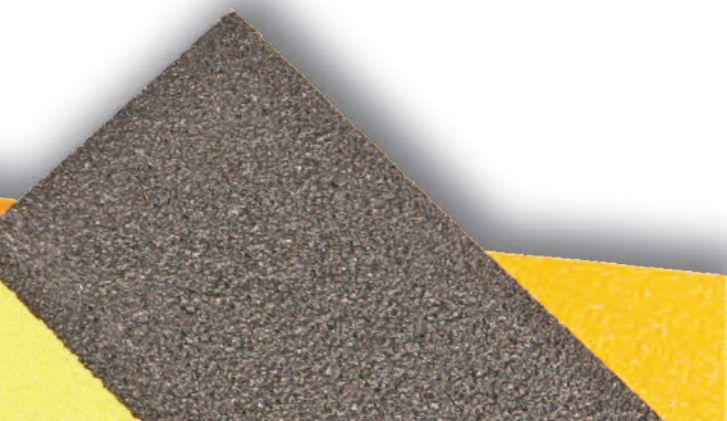
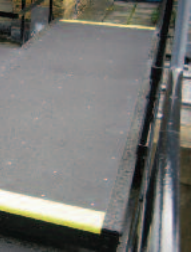
Unlike the alternative Suregrip will not require regular and expensive repair and replacement

Versatile

Wide range of contrasting colours

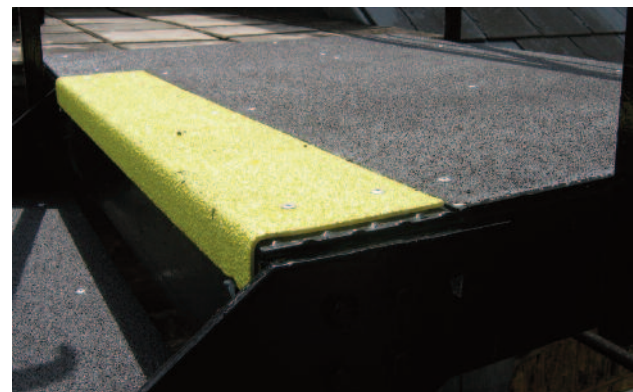
Environmentally Friendly

Longer lasting and much lower VOC emissions



Typical Applications

- Stair Treads
- Stair Nosings
- Flat Sheet
- Decking
- Landing Covers
- Ramps
- Scissor Lifts
- Platforms
- Bridges
- Work Platforms
- Roof Walkways
- Pontoons



suregrip

The suregrip Anti-slip product range

Suregrip Anti-slip Stair Edge Covers / Nosing

Suregrip Step Edge Covers are suitable for stairs that experience lower levels of foot traffic and fit over the front 70mm of the step, with a chamfered back edge to eliminate any trip hazard and up to a 30mm down-stand over the front of the riser. They comply with DDA legislation (Building Regulations 2000 Document M) and are a cost-effective way to provide a high visibility anti-slip surface. Stair edge covers can be fitted directly over any solid surface using a combination of glue and mechanical fixings.

ALL COVERS/NOSING CUT TO CUSTOMER DIMENSIONS
FREE OF CHARGE

Dimensions

Width	Max Depth (Going)	Front (Riser)
750mm	70mm	30mm
1000mm	70mm	30mm
1200mm	70mm	30mm
1500mm	70mm	30mm
2000mm	70mm	30mm
3000mm	70mm	30mm



Standard Colours
Yellow, White or Red

suregrip

Suregrip Anti-slip Stair Tread Covers

Suregrip Stair Tread Covers are designed to cover the entirety of the step and are most suitable steps that are in constant use/heavy use. The treads are 4mm thick, up to 345mm deep and range from 600 to 3600mm wide. The anti-slip stair tread cover can be fitted directly over any solid surface quickly and easily using a combination of glue and mechanical fixings. Once the tread cover has been installed the steps are immediately ready for use making them an ideal solution for repairing dangerous, worn or damaged steps.

ALL TREADS CUT TO CUSTOMER DIMENSIONS FREE OF CHARGE

Dimensions

Width	Max Depth (Going)	Front (Riser)
600mm	345mm	40mm
750mm	345mm	40mm
1000mm	345mm	40mm
1200mm	345mm	40mm
1500mm	345mm	40mm
2000mm	345mm	40mm
3000mm	345mm	40mm
3600mm	345mm	40mm



Standard Colours
Black, Yellow, Black with yellow nosing,
Black with White nosing or Stone

Suregrip Anti-slip Aluminium Stair Nosing

Suregrip Aluminium Stair Nosings are suitable for lighter-duty internal or covered applications such as offices and shops. They can be installed directly over stone, tiles or concrete steps and have a graduated back edge to eliminate any trip hazard. Covering the front 70mm of the step with a 30mm down-stand, the nosings are available in a variety of lengths that can be cut to size. Inserts are available in yellow, red, grey or black, and have either a 90° or 83° raked back angle.

ALL COVERS / NOSINGS CUT TO CUSTOMER DIMENSIONS
FREE OF CHARGE

Dimensions

Width	Max Depth (Going)	Front (Riser)
750mm	70mm	30mm
1000mm	70mm	30mm
1200mm	70mm	30mm
1500mm	70mm	30mm
2000mm	70mm	30mm
3000mm	70mm	30mm



Standard Colours

Aluminium base with yellow, red, grey or black inserts

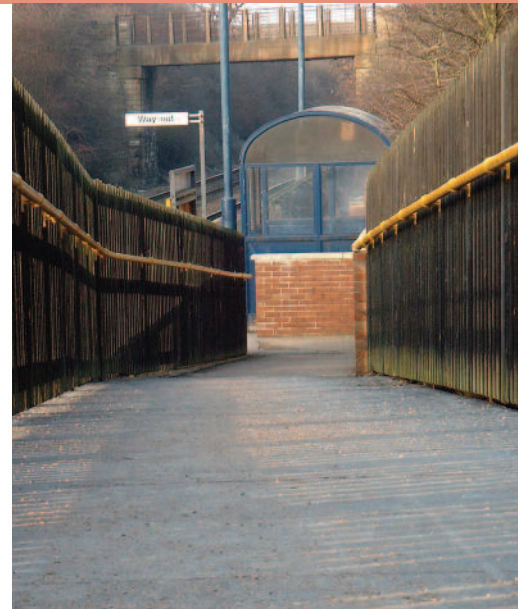
Suregrip Flat Sheet

Suregrip Flat Sheet is manufactured in either 2440mm x 1220mm or 2000mm x 1000mm panels with a hardwearing anti-slip finish. Standard colours are black and yellow. The flat sheet can be fitted directly over any solid surface quickly using a combination of glue and mechanical fixings, to provide an immediate, long-lasting, anti-slip surface on ramps, platforms, walkways, loading bays or anywhere a slip hazard exists.

ALL COVERS / NOSINGS CUT TO CUSTOMER DIMENSIONS
FREE OF CHARGE

Standard Sizes

Length	Width
2440mm	1220mm
2000mm	1000mm



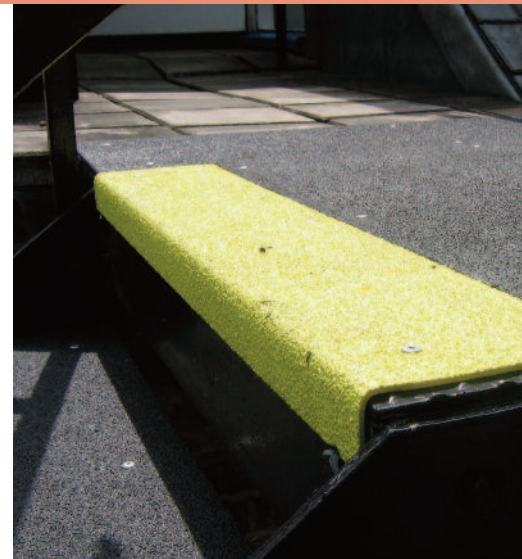
Standard Colours

Black or yellow

The suregrip Anti-slip product range

Suregrip Landing Covers

Suregrip Landing Covers combine a flat sheet and stair tread to provide a seamless anti-slip covering for either the top step or landings. Standard colours are black, light grey and yellow, and a contrasting leading edge can be applied to comply with DDA legislation. The landing covers are the same thickness as the flat sheet so can be butted up together if a longer run or length is required. Installation is quick and easy using a combination of glue and mechanical fixings to create a long-lasting, anti-slip surface.



Standard Colours
Black or yellow with contrasting nosing

**ALL COVERS/NOSING CUT TO CUSTOMER DIMENSIONS
FREE OF CHARGE**

Standard Sizes

Length	Width	Front (Riser)
2440mm	1220mm	40mm
2000mm	1000mm	40mm

Suregrip Moulded Grating

Suregrip Moulded GRP Gratings are anti-slip light weight structural panels with excellent corrosion and chemical resistance. Simple to cut and fabricate and with an excellent strength to weight ratio, the grating are supplied with a full range of accessories including adjustable feet, support profiles including I beams, box sections, posts and handrails so that complete lightweight and corrosion free structures can be manufactured quickly and easily. SureGrip Gratings are ideal for walkways, work platforms or for covering trenches and gullies.



**ALL COVERS / NOSINGS CUT TO CUSTOMER DIMENSIONS
FREE OF CHARGE**

Standard Sizes

Height (mm)	Mesh Size (mm)	Standard Size (mm)	Open Area Panel	Weight kg/m ²	Available Colours
13	38 x 38	3660 x 1220mm	72%	6.00	Green, Yellow or Grey
14	20 x 20	1247x4047mm	42%	9.00	
25	38 x 38	3660 x 1220mm	69%	12.32	
		2000 x 1000mm			
		3000 x 1000mm			
30	38 x 38	3660 x 1220mm	69%	14.60	
		3000 x 1000mm			
		3660 x 1220mm			
30	20 x 20	3000 x 1000mm	42%	18.10	
38	38 x 38	2000 x 1000mm	68%	19.71	
		3000 x 1000mm			
		3660 x 1220mm			
38	20 x 20	2000 x 1000mm	42%	22.50	
		3000 x 1000mm			
50	50.7 x 50.7	1225 x 3660	69%	22.17	

suregrip Installation Instructions

Suregrip is generally glued and screw fixed. Suregrip external grade adhesive mastic is ideal since it will make up minor deviations in the substrate and prevent the GRP drumming or rocking. Suregrip external grade adhesive mastic should be applied to sound, clean dry surfaces if it is to be the only method of fixing in lightly trafficked areas. If application is to damp, dirty or friable surfaces or in very cold weather, use

Suregrip external grade adhesive mastic to bed the GRP item into place and then always screw fix. Screw fixings are generally at about 600mm intervals. Drilling through the placed GRP is easy using a standard twist drill suitable for wood or metal. Countersinking is not required (see below). Screw fixing should also be used if the GRP is likely to be trafficked before the Suregrip external grade adhesive mastic has set.

Trimming

A good quality jigsaw or hacksaw can be used for trimming. The GRP material is quite tough to cut so if too much trimming is envisaged, please ask about our cut to size service.

Fixings

The following may be used as a guide.

To timber: No.8 x 30mm zinc plated or stainless steel screws.

To steel plate: No.8 x 20mm self-tapping pan head Pozi stainless steel screws or No.8 x 20mm self drilling pan head Philips zinc plated screws.

To concrete: No.8 x 30mm zinc plated or stainless steel impact anchors (Hilti HPS-1 or similar).

To open mesh: Stainless steel or zinc plated saddle clips and domed head bolts suitable in length for the depth of the existing treads.

Countersinking

When drilling holes in the GRP we do not recommend countersinking. When the screw is screwed down firmly, the screw head becomes embedded in the surface texture. The top of the screw head should be flush with the surrounding surface and therefore not present a trip hazard.

Preparation

Very little preparation of the substrate is required. It should be reasonably clean and dry if the external grade adhesive mastic is to be the only means of fixing. Badly dished or holed concrete etc should ideally be filled. Suregrip external grade adhesive mastic will take up minor undulations and imperfections.

Fitting

Lay the items in place to ensure that they fit. Trim using a jigsaw with medium cutting blades (Bosch T101 AIF or similar are ideal).

Drilling

Hold the GRP in place and drill through the panel and into the substrate. A rawl plug will probably be required in a concrete base. The drill hole in the GRP does not need to be larger than that drilled into the substrate.

Suregrip GRP Treads / Step Covers

Drill two holes at each end of the Step Cover, one approximately 15mm in from the back edge and 15mm in from the side. The second hole should be approximately 15mm in from the side and on the line where the black tread meets the yellow or white nosing. It is unlikely that the Step Covers will require additional fixings in the middle of the tread, (unless the tread is over 1500mm long).

Suregrip Stair Edge Covers / Nosings

Drill holes approximately 50mm in from each edge and thereafter at approximately 300-400mm intervals.

Suregrip Landing Covers & Flat Sheet

Fixings should again be approximately 15mm in from the edges. Additional fixings should be at 600mm intervals.

Suregrip External Grade Adhesive Mastic

After drilling holes in the GRP, turn the panel over and apply the Suregrip Adhesive mastic. (The 310ml tube fits into a standard skeleton gun, also available from Suregrip). Apply a 6mm bead around the periphery of the GRP panel and in horizontal stripes at approximately 200mm intervals. Immediately press the GRP panel

firmly into place. The Suregrip Adhesive Mastic will generally have achieved a good bond within 2-4 hours in normal drying conditions. If the Suregrip Adhesive Mastic is to be the only method of fixing, please ensure that a good bond has been achieved before re-opening the area for use. As a guide one 310ml tube of Suregrip Adhesive Mastic is sufficient for any one of the following:

5 x 600mm wide Step Covers
3 x 1000mm wide Step Cover
2 x 1500mm wide Step Covers
2 x Landing Covers
2 x 1200mm x 1200mm Sheets
1 x 1200mm x 2400mm Sheet
12 x 1000mm lengths of Safety Edge
8 x 1500mm lengths of Safety Edge

Suregrip GRP Grating

This is either laid into a frame or fixed to an existing gantry etc. We supply suitable fixings – please see www.antislipflooring.co.uk for details. There are many different ways to fix grating to the substrate. If you have purchased grating clips from us, you should use the following information as a guide: 'M' and 'L' Clips: Set out where you will be positioning your grating clips, a guide would be in each corner and then every 500mm. Push the clips into the open mesh squares so that the clip sits neatly on the load bar(s) and the clip's base is sitting close to the bottom of the grating panel. If you are fixing directly into the existing surface, drill a pilot hole through the clip and into the substrate then fix using the appropriate screw and plug. If you are fixing into a support frame you will need to drill through the frame and then put through the bolt fitting whilst tightening the washer and nut underneath the frame.

'C' Clips: Set out where you will be positioning your grating clips, a guide would be in each corner and then every 500mm. Join the two grating panels together and then slot over the 'C' clip and twist in place, simply tightening the bolt and nut. Please note that Suregrip GRP Grating is more difficult to cut on site than the other GRP items – remember, we cut to size at no additional charge.

Safety

Gloves are recommended when handling GRP. A dust mask and goggles should be used when cutting the product. Wear gloves when using Suregrip Adhesive Mastic and Suregrip Polyurethane Adhesive. Materials Safety Data Sheets are available for the adhesives. All products are available direct from The Versatile Flooring Co. Ltd in the UK and through agents worldwide. All Suregrip products are sold subject to the Company's Standard Conditions of Sale. The Company and its representatives are often asked to comment on potential uses of Suregrip products which differ from those described in the Company's data sheets. Whilst in such cases the Company and its representatives will always try to offer helpful and constructive advice, the Company cannot be held responsible for the results of such uses unless they are specifically confirmed in writing by The Versatile Flooring Company.



Product & Technical Data

CHEMICAL RESISTANCE	FIRE PERFORMANCE
Excellent	Tested to BS476 Part 7 Class 2
OPERATING TEMPERATURES	EFFECTS OF SUNLIGHT
-40°C to +110°C	The product is UV stabilised
NOMINAL PANEL WEIGHT (KG/M2)	NOMINAL THICKNESS (MM)
4.50kg	4mm
% GLASS FIBRE CONTENT	RESIN TYPE
35%	Un-saturated isophthalic polyester
HEAT DEFLECTION TEMP	FLEXURAL STRENGTH
90°C	100MPa
TENSILE STRENGTH	ELONGATION
65Mpa	1.3%
BARCOL HARDNESS	
45-50	

*The UK's premier
flooring solutions company*



Ecotile is manufactured from up to 100% re-cycled material.
EcoTile® and Suregrip® are registered trade marks of The Versatile Flooring Company

Copyrights © 2007 The Versatile Flooring Company Ltd., All rights reserved.



The Versatile Flooring Company
1 Devonshire Business Centre,
Cranborne Industrial Estate,
Potters Bar, Hertfordshire EN6 3JR

T: 0844 335 0460 F 0844 335 0461
info@versatileflooring.co.uk
www.versatileflooring.co.uk

Proudly manufactured in the UK

suregrip