

Cleaning & General Maintenance

By following these simple instructions you will help ensure that your floor looks good, maintains its anti-slip performance and you will also help extend its life span.

1. Non-ESD Floors - Apply two to three coats of a hard wearing floor sealer when the floor is new.
2. ESD / Anti-static Floors - Apply two to three coats of Selstat anti-static floor polish to enhance performance and durability.
3. Sweep or vacuum the floor to remove dust and dirt as often as is practical.
4. If available use a rotary scrubber dryer, if not a two compartment (separate clean & dirty water) bucket and mop.
5. Use clean water and a neutral pH floor cleaner in a weak solution.

Cleaning Methods / Recommendations

Rotary Scrubber Dryer

Cleaning the floor with a rotary scrubber dryer is the quickest and simplest method. If possible use a machine which has twin roller brushes and a powerful vacuum to suck up the dirty water. Investment in a good quality rotary scrubber dryer will save time, reduce cost by saving on labour and keep your floor looking good and performing well.

Equipment Recommendation

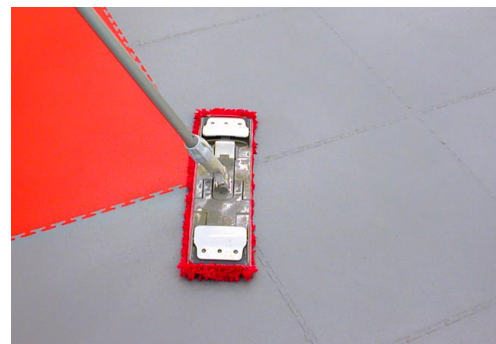
45.300 Karcher BR 45/40C - £1650.00 + VAT



Biomop System

Consisting of a mop with a micro fibre mop head and twin compartment bucket. The micro fibre mop head lifts dirt from the surface of the floor and the two compartment buckets ensure that your clean and dirty water remain separate. This damp mopping system leaves the floor clean and semi-dry ready for foot traffic. The biomop system is ideal for smaller installations or where the floor area is difficult to access.

45.600 Twin Compartment Bucket, Mop head, handle and 5 Microfibre Mop heads - £89.50 + VAT



Cleaning & Long Term Maintenance

Heavy Duty Cleaning, Degreasing & Stripping of polish:

A powerful heavy duty cleaning and degreasing concentrate that removes multiple coats of dirt, oil, grease and finish build-up. Ideal for factories and industrial applications

45.700 Viper Heavy Duty Floorstripper - Box of 4 x 4ltrs - £124.00 + VAT

General Day to Day General Cleaning:

Clean the floor with ROTEX is a one-step, neutral cleaner designed to quickly remove embedded soils without any residue. ROTEX requires no rinsing, and leaves a peach fragrance. Ideal for use with auto-scrubbers or the Biomop system.

45.200 Rotex Floor Cleaner - Box of 4 x 4ltrs - £59.50 + VAT

Floor Sealer / Polish:

To create a high quality finish and help reduce maintenance of your floor we recommend applying two to three coats or a good quality floor sealer. DISTANCE is a clear, high gloss, hard, thermacrylic floor finish with superior dirt and black mark resistance. Coverage 320 sq m

45.500 Distance Floor Sealer - Box of 4 x 4ltrs - £119.50 + VAT

ESD / Anti-Static Polish & Cleaner:

Retains performance even at humidities as low as 11% Independently tested to IEC 61340 - 4 - 1 and BS 7506. Improves the conductivity of conductive ESD flooring. Applies, hardens and protects like a normal floor polish. For cleaning dilute polish 40 parts clean water to 1 part polish and mop or rotary scrubber dry. Coverage 500 sq m with 2 coats (Polish also used for cleaning)

Selstat Anti-Static Floor Polish- Box of 4 x 5ltrs - £149.50 + VAT

Dr. Schutz Floor Mate

Recommended for removing trainer scuff marks and spot cleaning ecotile

45.000 Dr Schutz Floor Mate- 400ml bottle- £9.75 per bottle + VAT



How to maintain your EcoTile Floor

Keeping your floor clean and looking good is a simple task but will involve a small investment on your part in the correct equipment and chemicals and the introduction of a simple but professional cleaning regime. The cleaning regime will be dictated by the usage that your floor will experience and can be broken down into three categories as follows:

1. Preventive Measures

In entrance areas it is essential to install a large, effective dirt and moisture collection entrance mat which must be cleaned or replaced at regular intervals. This prevents a large percentage of dirt being carried into the building and diminishes wear and tear strain on the floor. Chairs fitted with either defective or missing gliders or unsuitable rollers/wheels destroy both the surface protection and the floor coverings themselves and should be changed or replaced.

2. Initial Clean/Re-sealing the floor

The floor must be thorough cleaned prior to applying the sealer in order to remove installation-related residues and building dirt from newly installed floors, to remove any possible existing care finish and to get rid of residues of care products and dirt in the case of older floorings.

Apply Rotex diluted with water (mix ratio is dependant on the resistance of the dirt residues). After allowing it to stand for 10-15 minutes, scrub the floor using a floor scrubber/polisher fitted with green pad. Rinse the floor with clean, if possible warm, water until all traces of dirt and cleaning agents have been completely removed (the mopping water no longer bears any traces of foam!).

3. Surface Protection with Distance Sealer

To protect the floor, help routine cleaning and prolong the lifespan of the flooring, a protective film of sealer can be applied immediately after completion of the cleaning. Distance is a long-term sealer is particularly durable and will help improve the anti-slip performance of the floor.

3.1 Initial Treatment: After cleaning, apply one to two / three coats of the sealer evenly to the dry floor with a mop if using the general purpose sealer or a short pile roller (10 mm) if using the heavy duty sealer. Between applications wait for the previous film to dry and become firm enough to walk on but apply both coats on the same day.

3.2 Repair and Renewal: Depending on the level of use and usage conditions, the sealer film should be checked at regular intervals for signs of wear and tear and a renewed sealer operation performed if required. For this purpose, after thoroughly removing dirt and other residues apply sealer to the dry floor. It is possible to carry out repair and renewal of partial areas.

Note: Before applying sealer remove the shine from the floor surface using the floor scrubber and green pad to guarantee an optimum adhesion of the following sealer coat. Freshly sealed floors can be walked on after 4 hours if the general purpose sealer has been used and 24 hours if the heavy duty sealer has been used.

4. Maintenance of EcoTile ESD / Anti-static Floor Tiles - VERY IMPORTANT

We recommend applying two coats of Selstat anti-static floor sealer to EcoTile ESD Floor tiles when first installed to improve and help maintain the conductivity of ESD tiles. Selstat once applied, hardens and protects the floor and helps maintain an anti-slip finish. Selstat must be applied to a clean grease free floor. Apply a thin even film of Selstat using a clean lint free mop or applicator. Apply a second coat when the first is dry (approximately 30 minutes). COVERAGE: 60 square metres per litre.

4.1 Use a dedicated set of cleaning equipment for the ESD floor - Do not use equipment that has been used on other floor types or areas of the building where it may have come in contact with strong acid or alkaline cleaners. This could damage the ESD performance of your floor. WE STRONGLY RECOMMEND USING ROTEX NEUTRAL PH FLOOR CLEANER FOR MAINTAINING ECOTILE ESD FLOORING. USE OF ANY OTHER PRODUCTS MAY INVALIDATE YOUR WARRANTY.

4.2 Dust Removal: It is essential to prevent a layer of insulative dust building up on the ESD floor which may restrict the ESD performance of the surface. Remove loose surface dust and dirt by sweeping, vacuum or wiping over the floor with a slightly damp mop, we recommend the Unger Biomop system.

4.3 Manual or Mechanical Wet Cleaning: To remove dirt adhering to the floor dilute 1:10 Selstat polish with clean water using the wet mopping method, clean the floor with a suitable mop (e.g. Biomop) or using a cleaning appliance (e.g. rotary scrubber/dryer).

4.4 Intermediate Cleaning: In cases where it is no longer possible to remove dirt adhering to the floor surface by wet mopping, perform an intermediate cleaning operation with detergent in a dilution with water appropriate to the level of dirt present (e.g. 1.50 to 1:100).

Regular polishing up of the floor after cleaning with floor polisher with a white pad is recommended for optimum maintenance of floor condition and to facilitate cleaning.

5. Routine Cleaning and Care

5.1 Dust Removal: Loose surface dust and dirt is removed by sweeping, vacuum or wiping over the floor with a slightly damp mop, we recommend the Unger Biomop system.

5.2 Manual or Mechanical Wet Cleaning: To remove dirt adhering to the floor dilute detergent in a ratio of 1:200 and, using the wet mopping method, clean the floor with a suitable mop (e.g. Biomop) or using a cleaning appliance (e.g. rotary scrubber/dryer).

5.3 Intermediate Cleaning: In cases where it is no longer possible to remove dirt adhering to the floor surface by wet mopping, perform an intermediate cleaning operation with detergent in a dilution with water appropriate to the level of dirt present (e.g. 1.50 to 1:100).

Regular polishing up of the floor after cleaning with floor polisher with a white pad is recommended for optimum maintenance of floor condition and to facilitate cleaning.

6. Removal of Stains and Rubber Heel Marks

Stubborn stains and rubber heel marks can be removed using undiluted PU-Cleaner together with a cloth or nonabrasive white pad. Subsequently wipe over the area with clear water. Remove stains immediately if possible since certain types of stains settle into the flooring as they age and can then only be removed with difficulty or are impossible to remove completely.

PLEASE REMEMBER THE FOLLOWING RULES

- Regular & light cleaning is better than infrequent and heavy cleaning.
- Do use an entrance mat to remove as much dirt and moisture.
- Do use a neutral PH floor cleaning detergent
- Don't use an excessive concentration of cleaning detergent, it will leave a sticky residue on the floor making cleaner harder in the future.
- Do use the correct cleaning equipment, either a two component bucket and mop system or rotary scrubber dryer, it may cost a bit more up front but will save you a fortune in time and effort in the long run.
- Don't use excessive amounts of water, this will make your job harder, not easier, damp mopping is the best solution.
- For floors with high levels of pedestrian traffic seal the floor with a hard wearing floor polish, it will help with cleaning and extend the durability of the finish



The Versatile Flooring Company
1 Devonshire Business Centre
Cranborne Industrial Estate
Potters Bar Hertfordshire EN6 3JR
T: + 44 (0) 01707 800060
F + 44 (0) 1707 657282
www.versatileflooring.co.uk
info@versatileflooring.co.uk

